

The SilentPET® acoustic lights combine modern design, excellent light and energy efficiency with optimal acoustics. Particularly in the office or living area, the highly absorbent acoustic solution increases quality of life and work.

COLOUR & SURFACE

The acoustically highly effective SilentPET® panel has a white core, is laminated with a white felt or thermally treated as standard and reflects light pleasantly in the room. On customer request, a coloured lamination can be supplied instead of the plain white surface or being coloured in any RAL or NCS colour.

DIMENSIONS & SHAPES

In addition to the standard dimensions, the acoustic lights can be produced in any shape according to the customer's wishes. This enables the design of acoustically effective and efficient light sources.

Standard dimensions:
1200 x 1200 mm, 1200 x 2400 mm, ø 1200 mm

Acoustic element: Home & Office or Print & Art

Panel thickness: 50 mm

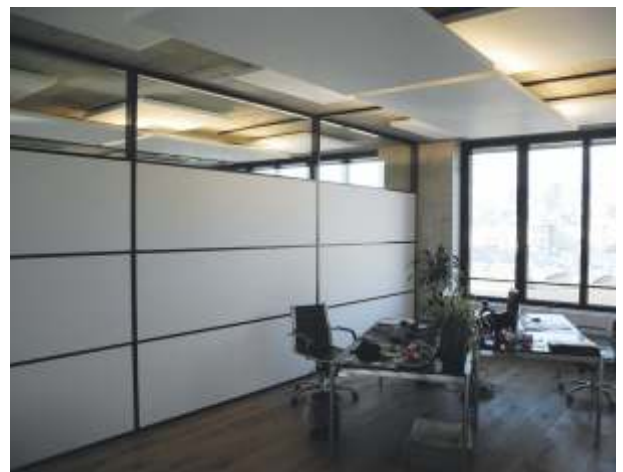
Weight: approx. 2600 g/m²

incl. mounted absorber screws and suspension set
(other dimensions and grammages on request)

Light source:

LED lamp, output: 3000-4000 lumen

(detailed specifications according to data sheet)



INSTALLATION

The acoustically effective light can be mounted directly or with a steel cable system with an adjustable height or being mounted on the wall using an aluminium profile. A special suspension and rail system has been developed for ceiling and wall mounting.

ADVANTAGES

- acoustics combined with light source
- increased quality of life and work
- different shapes and colours possible
- no emission of fine dust particles
- very robust and impact resistant
- easy ceiling or wall installation
- environmentally friendly produced acoustic panel

SOUND ABSORPTION

Sound absorption class: A
 Sound absorption coefficient α_w : 0.90
 SilentPET[®] Home & Office 1200 x 2400 x 50 mm
 RECwhite 2600 g/m², suspension height 500mm
 (Prüfung nach DIN AN ISO354 / DIN EN ISO11654)

FIRE RESISTANCE & COMPOSITION

Temperature range: -30 °C to +80 °C
 Classification according to EN 13501-1, B-s1, d0
 60% PET recycled fibers, 40% Bicofibers
 (adhesive fibers), surface felt-laminated or thermally
 treated.

